

Learning for Living Newsletter

Learning for Living

Developing access to *Skills for Life* for adults with learning difficulties and/or disabilities

Skills for Life is the national strategy for teaching literacy, language and numeracy to adults.

As part of this strategy, the government has prioritised work with adult learners with learning difficulties and/or disabilities.

This is a diverse group of learners, around 8.5 million people in Britain, with a wide range of abilities and needs.

The Learning for Living project will look at literacy, language and numeracy to develop a range of guidance materials, not only for teachers and practitioners, but also for carers, support workers, employers and anyone working with this group of learners.

Barry Brooks, Deputy Director of the Adults Basic Skills Strategy Unit at the Department for Education and Skills, said at the project's launch, "I believe that this particular pathfinder project should create the

opportunities for those who I genuinely believe have the greatest needs, deserve the greatest opportunities and, often in a hostile and unsympathetic world, demonstrate the greatest potential.

This [project] is about change; change to the culture of learning, change for the learner, and change for their life chances. For this group of learners, tangible changes in their skills, their quality of life and their confidence in their abilities must be our greatest priority if we genuinely wish to create an inclusive society".



Alan Tuckett, Director of NIACE, (National Institute of Adult Continuing Education) who is the leading partner on the

project, said "Government has an ambitious target of 1.5 million people improving their literacy,

language and numeracy skills by 2007. This innovative pathfinder programme will not only identify what works, but also help improve provision – thus raising adults' achievements. We are delighted that adults with learning difficulties and disabilities have been identified as a priority group."

Joyce Black, the Project Manager for NIACE, said "We have been waiting for the chance to undertake work in this area for a long time. This project will give us a chance to get best practice shared among teachers and managers."



Contents

Skills for Life – What does it mean for me? Page 1

Who will this project benefit? Page 2

Where and when will it take place? Page 3

How can I find out more or keep in touch? Page 4

The project is divided into development areas (described on the next page) in which guidance materials will be produced and piloted in a variety of contexts, such as:

- Adult Education
- Further Education
- Voluntary and Community Learning
- Prisons

- Workplace
- Care Settings

The guidance materials are being piloted in over 70 pathfinder sites across England until July 2005. The development teams will receive feedback from the piloting phase and use this to adapt and change the guidance materials before the final production.



Pre-entry and Entry Levels

includes high support needs, wider key skills, transitions and the pre-entry curriculum framework. Dr Lesley Dee and the team at the University of Cambridge are managing these areas of work. For more information email ea220@cam.ac.uk.



Access to Employment

is working to identify strategies and good practice around entering employment. Sue Southwood at NIACE is managing this area of work. For more information email sue.southwood@niace.org.uk



The **Offenders** work is running alongside all the development areas to ensure that all materials produced are relevant for education staff working in offender institutions. Dr Liz Maudslay and Lynn MacQueen are managing this area of work. For more information email c/o_narzny.khan@niace.org.uk

Access for All Families

is working to develop effective approaches to family programmes for parents and carers with learning difficulties and/or disabilities, which is being managed by Jill Reilly and the team at the Basic Skills Agency. For more information email jillr@basic-skills.co.uk



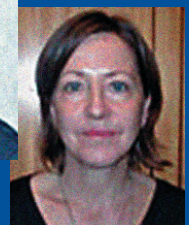
ESOL Access for All is working with bilingual learners with learning difficulties and/or disabilities. Dr Ross Cooper and the team at the LLU+ at London South Bank University are managing this area of work. For more information email tranzae@lsbu.ac.uk

Teacher Training is developing level 3 and level 4 modules for people who teach literacy, language and numeracy to adults with learning difficulties and/or disabilities. Heather Thomas, who is working as a consultant for NIACE is managing this work. For more information email heatherthomas@aol.com



NIACE are leading a consortium of key national bodies and are responsible for the overall management of the project. Joyce Black leads the team at NIACE.

As part of this process, the Internal Evaluation is being conducted by Muriel Green and the team at LSDA (Learning and Skills Development Agency). For more information email jellis@lsda.org.uk



Six pathfinder managers have been appointed to work with our pathfinder sites, which are piloting the guidance materials across England. If you would like more information about the pathfinder activities happening in your area please contact your nearest pathfinder manager.

Joy Solomon is the Manager for our Prisons pathfinder. Joy is a Director at Amersham and Wycombe College, during which time she has been responsible for the second largest prison education contract in the country as well as other national pathfinder projects. For more information please contact: jsolomon@amersham.ac.uk

Elizabeth Jackson is the Pathfinder Manager for our Northern region. Elizabeth has been teaching for over 20 years and has co-managed provision for learners who have a wide range of disabilities including severe learning difficulties, visual impairments, emotional, behavioural and mental health difficulties at Liverpool Community College. For more information please contact: elizabeth.jackson@liv-coll.ac.uk

Emma Killick is the Pathfinder Manager for our South East region. Emma has worked at Macintyre Charity with children and adults with learning disabilities and learners working at pre-entry levels for over 14 years. In addition Emma has also had responsibility for managing a two year Adult and Community Learning Fund training project for adults with learning disabilities to become trainers. For more information please contact: emma.killick@macintyrecharity.org

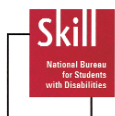
Cherry Brooks is the Pathfinder Manager for our Central region. Cherry has extensive experience in the contract management of youth and adult training programmes and has had responsibility for special educational needs in many previous roles. Cherry is also involved in and represents Derbyshire on several local and national initiatives. For more information please contact: cherry@pspeople.co.uk

Mary Moore is the Pathfinder Manager for our South West region. Mary has taught Basic Skills, Independence Skills and Preparation for Work to students with learning difficulties and disabilities for over 25 years. Mary also co-ordinates provision for learners with Severe Learning Difficulties and Disabilities at the City of Bristol College and has a particular interest in work based learning. For more information please contact: pathfinder@cityofbristol.ac.uk

Jenny Gartland is the Pathfinder Manager for our Eastern region. Jenny is the Director of Thanet Basic Skills Partnership. Jenny was previously Director of Curriculum at Greenwich Community College where she designed and implemented a system of Learning Support and managed ESOL, Literacy, Numeracy, Learning Difficulties and Disabilities, as well as Key Skills provision. For more information please contact: tbsp@thanet.ac.uk

NIACE are leading the Learning for Living Consortium, which is made up of key organisations in the fields of literacy, language and numeracy, learning difficulty and disability.

LEARNING FOR LIVING CONSORTIUM



Our Learning for Living project website has now gone live!

For information on the latest updates and developments throughout the life of the project go to www.dfes.gov.uk/readwriteplus/learningforliving/

Alternative versions of this newsletter can also be made available on request, such as braille, large print and audio tape. To order an alternative version of the newsletter or to be added or removed from our distribution list please contact Narzny Khan (see contact details below).

Please give us your feedback and comments on this newsletter and let us know if you have any case studies or interesting practice you would like featured in forthcoming issues, by contacting Narzny Khan on 0116 2044293 or narnzy.khan@niace.org.uk.



department for **education and skills**
creating opportunity, releasing potential, achieving excellence

